



1117 Frankfort Road • Shelbyville, KY 40065
• (502) 633-4593 • Fax: (502) 633-6713 •
www.shelby.ca.uky.edu

**4-H Project Entry
Shelby County Fair**

June 12th
11 a.m. to 5 p.m.
Floral Hall



**Adult Male Volunteer
Needed for 4-H Camp!**

Contact Regina or Candice for more
information

Ag Programs

- Raising Rabbits for Meat
- Backyard Chicken Basics
- Youth Livestock Auction
- Prevent/Control Pinkeye
 - Improve Hay Quality
- Equine Pasture Stocking Rates

**FAMILY &
CONSUMER
SCIENCES**

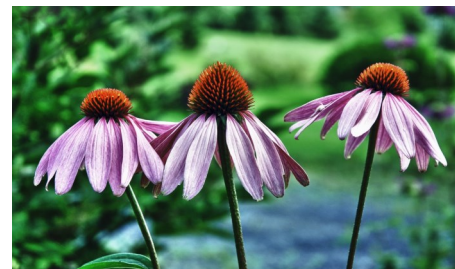


Creating Healthy & Sustainable Families

- First Saturday Walkabouts
- Sewing Circle
- Book and Plant Sale
- Spring Fashion Show
- Laugh & Learn Play Dates
- Homemaker Annual Meeting
- Walking Kentucky
- Homebased Microprocessor Workshop
- Canning Workshops
- Testing Your Pressure Canner

Horticulture

Dealing with Ticks



***Master Gardener
Spring Plant Sale***

**M
A
Y**

**2
0
2
3**

**J
U
N
E**



First Saturday Walkabout

Saturday, May 6
Saturday, June 3



Consider participating in the monthly **First Saturday Walkabout!** On the **first Saturday of every month from 8—8:30 a.m.**, sign in at the front desk of Clear Creek FAC and you will receive one **FREE Day Pass** per person. Afterwards, you can walk on the trails, on the walking path, or on the inside walking track. You can use your pass at any later date of your choosing.

Sewing Circle

1—3 p.m.

Join us for a set class project (details below).

3—8 p.m.

Bring any kind of your own project to work on during this time. Master Clothing Volunteers will be available to help answer questions or offer guidance on your project. *A light meal will be served at 5 p.m.*

Tuesday, May 9:

Four Corners Apron

Join us to make this very comfortable and flattering apron. One size fits all! Call the Extension Office for supply list.



Please call to reserve your spot. Sewing Circle will not take place during the summer months. The next date will be in September, and it will be held the first Tuesday of each month.

Homemaker Book Sale & Master Gardener Plant Sale

May 13, 9 a.m.-1 p.m.



Come support the Master Gardeners at their **Annual Plant Sale** and pick up some good books to read at the **Used Book Sale**



sponsored by the Homemakers. If you have used books in good shape that you would like to donate, please contact the Extension Office. All Book Sale proceeds support Shelby County 4-H.

Spring Fashion Show

May 18, 11:30 a.m. Registration & Silent Auction
12 p.m. Buffet Lunch
12:30 p.m. Fashion Show Begins

Come and see new fashions for the year at our Annual Fashion Show, hosted by the Shelby County Homemakers. The cost is \$15 per person, which includes lunch. Payment is due by May 11. Attendees are encouraged to bring quality items for the silent auction, with proceeds supporting the UK Ovarian Cancer Screening Program.



Laugh & Learn Play Dates

Thursday, May 25, 10 a.m.

Theme: Plants

Thursday, June 15, 10 a.m.

Theme: Insects

A free monthly playdate for children ages 3-5 and their caregiver. The program engages child(ren) in playful activities that are specifically designed to prepare them for kindergarten. Your child(ren) will listen to a story, sing songs, make crafts, play games, and enjoy a healthy snack. Parents/guardians must also attend the program to support their child(ren) through the activities. Registration is required. Limited seating.



Homemaker Annual Meeting

May 31, 10 a.m.


Everyone is welcome to attend this annual event. Our guest speaker is Georgia Green Stamper, a Kentucky writer and former NPR local commentator. *Small Acreages* is her latest collection of creative non-fiction essays. Cost is \$15 per person, which includes lunch. Registration due May 19. Bring money to bid on items in the silent auction, with proceeds benefiting the UK Ovarian Cancer Screening Program.



Walking Kentucky

June 1 - August 1



 College of Agriculture,
Food and Environment
Family and Consumer
Sciences Extension



Let's walk 417 miles across Kentucky this summer! All ages are welcome. Join as an individual or in a team. All physical activity counts as "steps". Keep track of your "steps" along the way and turn in a completed log at the conclusion. Finish the challenge by turning in your completed log and program survey to

receive a free t-shirt! Register online at tinyurl.com/963yftu8 or scan the QR code. You can also register by calling or stopping by the Extension Office.

Homebased Microprocessor Workshop

June 23, 9:30 a.m.—2:30 p.m.

Attend at the Extension Office or on Zoom

Homebased microprocessors are farmers who grow and harvest produce to use in their value-added products. Homebased microprocessors are required to grow a predominant ingredient in the products they make. The first step to becoming certified as a homebased microprocessor is to attend a Homebased Microprocessor workshop presented by the University of Kentucky. The cost of the workshop is \$50.00. For more information visit ukfcs.net/HBM. To register, call the Extension Office or email elizabeth.coots@uky.edu. This will be the last workshop for the state of Kentucky for 2023.



Canning Workshops

June 20, 9 a.m. or 6 p.m.

August 4, 10 a.m.

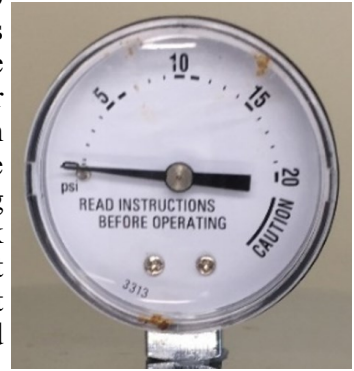
August 8, 6 p.m.

Interested in learning how to safely home can? Or

interested in honing your skill and brushing up on best practices? Join us for this hands-on workshop where we will cover the basics of home canning. Learn the methods of boiling water canning, pressure canning, and which canner to use based on the food you process.

Do you have a pressure canner?

If you are planning to pressure can this summer, now is the time to make sure your pressure canner is in good condition and the dial gauge is working properly. First, check the rubber gasket that fits around the lid. It should be soft and flexible, not dry, cracked, or brittle. Also make sure any small vent pipes or other openings are clean and open all the way through. You should be able to see light through the vent pipe.



Second, get the dial gauge on your canner tested for accuracy before you use it. Every pound of pressure on the gauge is important to ensure that the temperature inside the canner is high enough (240 degrees Fahrenheit) to kill the spores that can cause botulism.

If your gauge is reading high, the temperature inside your canner will be lower than expected. Food will be underprocessed and botulism could result. If your gauge is reading low, the temperature inside the canner will be higher than expected. Foods will be overprocessed. Overprocessing is not a food safety issue, but can lead to poor quality canned foods.

The Extension Office has the equipment to test your canner and we offer this service free of charge. If your canner is a *weighted gauge*, you do not need to have it tested (and there isn't a way to test it) - as long as it has not been damaged, it should remain accurate. Call or email to schedule a time to bring your canner lid to have your gauge tested.

Articles By:

Elizabeth Coats
Cooperative Extension Agent for
Family & Consumer Sciences

F
A
M
I
L
Y
&
C
O
N
S
U
M
E
R
S
C
I
E
N
C
E
S

Dealing with Ticks

There are over 700 species of ticks, but most are not commonly encountered by humans. In Kentucky, the known problematic tick species include the Lone Star Tick, American Dog Tick, Brown Dog Tick, Blacklegged (or Deer) Tick, Winter Tick, Asian Longhorned Tick, and the Gulf Coast Tick. Most ticks will seek out three different hosts at three separate times in their life. Twice as nymphs (juveniles) before molting, and then once more when they are an adult, right before mating and laying eggs.

Ticks are very hardy, many being capable of living for years without a bloodmeal. A common myth about ticks is that they wait up high in the trees, jumping down onto their prey as they pass underneath them. This isn't true, but the truth isn't much better. Ticks are physically incapable of jumping, instead, they identify well used paths (sensing things like vibrations, body heat, breath, and body odor) and climb onto low hanging plants and branches, waiting with their forelegs stretched out for something to brush against them. Once on a host, they usually take a while to find the perfect place to feed from. On humans, ticks commonly climb upward until they find a crevice or someplace warm, then they insert their mouthparts, using the compounds in their saliva to keep their host unaware. They then feed for several days before dropping off to go molt or mate.

Ticks are well known for being vectors for diseases. Not all tick species can be a vector for every pathogen, and not every bite results in disease. With some diseases (but not all), the tick must feed for a while before the pathogen is transmitted to the host (in the case of Lyme disease, it's around 36 hours). So checking for and removing a tick as soon as it's noticed is an important preventative for certain tick-transmitted diseases. In Kentucky, diseases reportedly known to be transmitted by ticks include Rocky Mountain Spotted Fever, Ehrlichiosis (Tick must feed for at least 24 hours to transmit this one), Lyme disease (reports in Kentucky are few), Anaplasmosis, Tularemia, and Red Meat Allergy. Most of these diseases can be averted with early intervention and an antibiotic, but if you know you have been recently bitten by a tick it may be a good idea to hold onto it for a while just in case you begin to develop symptoms of a disease within two weeks. Seek professional

medical help if you suspect a tick-borne disease.

Protect yourself against ticks by checking for them when working in areas where they may be active, avoid walking through uncut fields, and do use repellents, treat clothing or gear (especially around the ankle area) with permethrin, and wear long pants (light colored clothing makes spotting ticks easier), socks, and boots. If you're looking to apply chemical pesticides to an area, here are some common examples of active ingredients used to prevent ticks:

- **Bifenthrin:** Homeowner and commercial.
- **Carbaryl:** Homeowner and commercial.
- **Cyfluthrin:** Homeowner and commercial.
- **Deltamethrin:** For commercial use only.
- **Lambda-cyhalothrin:** Commercial only.
- **Permethrin:** Homeowner and commercial.
- **Pyrethrin:** Homeowner and commercial.

When removing a tick that is imbedded in skin, use tweezers to grasp it as close to the mouthparts as possible then pull upwards slowly, applying steady pressure until it lets go. Do not twist or jerk the tick (its mouthparts may break off or it may regurgitate the contents in its stomach). Clean the bite area with soap or rubbing alcohol. Finally, place the tick in a sealed plastic bag and note the date and location. This can be helpful for getting it identified or tested if you end up feeling sick.

The Extension Office is available to help identify ticks you may have found. The University of Kentucky is also running a Tick Surveillance Program where they are taking and testing ticks found across the state for the prevalence of three pathogens. Know that this is a science volunteer opportunity and not designed as a testing service where a volunteer will be contacted with a potential diagnosis. If you are concerned about a possible infection, seek medical help. If you have found a tick and want to participate in this surveillance program, all information on how to prepare the tick for shipment (they DO NOT take live ticks) can be found on the University of Kentucky Department of Entomology website (<https://entomology.ca.uky.edu/tickssurveillance2022>). The program began in 2022, but they will continue to take samples in 2023.

Sources:

Kentucky Pest News: [Link here](#)
 Ticks and Diseases in Kentucky: [Link here](#)

Upcoming Classes/Events:

Growing Vegetables

It's the time of year to be planting vegetables! Come join us and learn about planting, maintaining, and harvesting various vegetables in Kentucky and which varieties tend to be popular in our area. The class will be on **May 10th** starting at **5:30 p.m.** Please call the Extension Office (502) 633-4593 to sign up.

Home and Garden Pests

Learn about various common home and garden pests and the techniques designed to help keep them out. The class will be on **May 24th** at **5:30 p.m.**, please call the Extension Office at (502) 633-4593 to sign up.

Gardening with Small Fruits

Everything you need to know about how to successfully grow small fruit plants (strawberries, blueberries, etc.) in Kentucky. Join us on **June 29th** at **5:30 p.m.** and call the Extension Office at (502) 633-4593 to sign up!

Beekeepers Association:

The Beekeepers Association meets every **4th Thursday of the month at 7 p.m.** to discuss everything that is currently relevant in beekeeping. Friendly towards both experienced beekeepers and beginners looking to learn, feel free to join us on **May 25th** and **June 22nd**.

Master Gardener Association:

The Master Gardener Association meets every **2nd Tuesday of the month at 6:30 p.m.** The next meeting, however, will not be until July because the plant sale and the June picnic will take the place of the meetings. Under normal circumstances, both in-person and zoom options are available.

Set up for the plant sale will be on Friday (May 12th) starting at 12pm at the Extension Office.

The June picnic this year will be on the 23rd at Carol Luken's home. Call if you need directions.



PLANT SALE
SATURDAY, MAY 13
9 AM – 1 PM
SHELBY CO. EXTENSION
1117 FRANKFORT RD, SHELBYVILLE
PERENNIALS, HERBS, SHRUBS & TREES

Articles By: *A. Skye Drane*
Skye Drane
Horticulture Technician

**H
O
R
T
I
C
U
L
T
U
R
E**

4-H Camp

4-H Camp paperwork has been sent out to everyone registered for 4-H Camp. All paperwork and payments are due by May 12. Plan on attending the 4-H Parent/Camper Orientation on May 23 at 6 p.m. at the Extension Office.

We will notify youth that are on the waiting list if a spot becomes available. If you know you cannot go to camp and have reserved a spot, please let us know as soon as possible. We have several youth on a waiting list.

We would love to have another adult male volunteer for camp. If you are interested, please contact Regina or Candice.



**4-H CAMP
TIME WARP**

Shelby County Fair

The Shelby County Fair will be **June 12-17**. We are looking forward to showcasing all of the great project work of our 4-H members.

All 4-H project entries will be accepted from 11 a.m. to 5 p.m. at Floral Hall on Monday, **June 12**. The doors will be locked at 5 p.m. and late entries cannot be accepted. If you would like to pre-enter items, please call the Extension Office. Please check the Fair Catalog for rules and information. Several categories have changes, so be sure to review the fair catalog.

- We have several 4-H'ers that exhibit Dairy Cattle. Come check them out at the Shelby County Dairy Show. The show will be held on **Monday, June 13** at 5 p.m. and it is an open show. The Shelby District Dairy Show will be held at 9 a.m. on **Tuesday, June 14**.
- The Youth Rabbit Show will be held on **Wednesday, June 14** at 3 p.m. Rabbits are great for children that want an animal project but don't have space for livestock. Come and check out all the breeds and varieties that 4-H'ers exhibit at the rabbit show.
- A 4-H Poultry Show will be held on **Wednesday, June 14** at 5 p.m. for youth with chickens, ducks or other poultry they would like to exhibit. Chickens are quickly becoming a very popular 4-H project.
- The Hog, Sheep and Goat shows will be held on **Friday, June 16** beginning at 8 a.m. with the hog show. The lambs will show at 1:30 p.m. and the goats at 3:30 p.m. We have several 4-H members that will be showing throughout the day.

- The Open Beef Show will be held on **Saturday, June 17** at 10 a.m. The Heifer Show is open to all exhibitors There will be a Steer Show for Shelby County Livestock Club members only, but open steer classes will be offered as well.



JUNE 12-17

Shelby County 4-H Projects at the Fair

4-H Fair Project Catalogs are available at the Extension Office. It details all of the categories that 4-H members can enter projects in at the county fair. I encourage 4-H members to pick up a catalog and start planning your fair entries now. The official Shelby County Fair Catalog will be available in May as an insert in the Sentinel News. We also have 4-H Fair Recipe Books available at the Extension Office for all of the food categories.

Shelby County Youth Livestock Auction

The Shelby County Youth Livestock Foundation has been formed by community members to sponsor an auction to support youth with livestock projects. Any youth in 4-H and FFA with a project could participate in the auction including dairy, beef, sheep, goats, rabbit or poultry projects. The auction is tentatively planned for September. Interested families should plan to attend an informational meeting about auction guidelines on Monday, May 8th at 6p.m. at the Shelby County Extension Office.



4-H Teen Conference

Kentucky 4-H Teen Conference will be held June 13-16 at the University of Kentucky. Delegates have the opportunity to live in a college dorm and participate in a workshop in one Kentucky 4-H's core content areas. Participants will have a leadership training workshop and conduct a community service project in the Lexington Area. Also at the conference the Achievement Award winners will

Kentucky 4-H Horse Show

The Kentucky 4-H State Horse Show will be held June 24-29 at the KY Fair and Expo Center. All 4-H'ers must attend at least one show or clinic to qualify to attend the State Horse Show in addition to the required 6 hours of education. A **Verification Form** is required and should be signed by the Show or Clinic Secretary/Manager of the event you attend. The **Project Horse Eligibility Form** must be completed online by May 15. The **State Show Entry Form** must be completed by June 1 and hopefully will be done electronically this year. A negative Coggins test, proof of Flu/Rhino vaccine, health papers, photo release, photos of the project horse, and signed verification form are required. Please note that June 9 is the last day that Flu/Rhino can be administered to participate in the State Horse Show.

More information can be found at the State 4-H Horse Website at <https://afs.ca.uky.edu/4h-youth/horse/show-rules-regulations-resources>.



4
~
H

Y
O
U
T
H

D
E
V
E
L
O
P
M
E
N
T

be recognized and the State 4-H Fashion Revue will be held. The opening event and dances will give delegates an opportunity to meet with 4-H'ers from across the state of Kentucky.

Kentucky Teen Conference is open to all senior aged 4-H members. The cost of the conference is \$200, but the Shelby County 4-H Council will pay half so the cost to 4-H members is \$100. Deadline to register in Shelby County is May 12. If you have any questions, please contact us at the Extension Office.

Shelby County 4-H Communication Contest Results

Congratulations to the youth that participated in the Shelby County and Area Communication Contests. Many of our county winners advanced to the Area Communication Contest in Taylorsville on April 15. Area winners will have the opportunity to compete in the State 4-H Speech and Demonstration Contests in July in Lexington. Good Luck to those 4-H'ers!

17-18 Year Old Speech

Madeline Greulich Blue/Champion
Area Champion

Max Semeniuk Blue

SR SET Demonstration

Michael Greulich Red/Champion

JR SET Demonstration

Wesley Reed Blue/Champion

JR Clothing & Textiles Demonstration

Beatrice Reed Blue/Champion

JR Health

Noah Smith Blue/Champion
Area Blue

JR Digital Media Presentation

Luke Smith Blue/Champion
Area Champion

JR Team Demonstration

David & Andrew Greulich Blue/Champion

Variety Acts

Addison DeSimone Blue/Champion
Area Champion



Help 4-H Members Thrive!

Challenging 4-H members in supportive and helpful ways teaches them that they can learn, grow, and get better through effort. Encouraging youth to take positive risks, like speaking in front of others, helps develop confidence and a growth mindset. Youth have a growth mindset when they believe that they can get better at things by working hard and putting in effort. Research shows that a growth mindset is an important quality for thriving and future success. Becoming open to challenge and discovery is a developmental process—meaning that it increases a little bit at a time over childhood and adolescence. Helping youth develop their abilities happens by gradually increasing the challenge of 4-H opportunities

“In a growth mindset, challenges are exciting rather than threatening. So rather than thinking, oh, I’m going to reveal my weaknesses, you say, wow, here’s a chance to grow.”

Carol Dweck, Ph.D. Growth Mindset Researcher Stanford University

Articles By:
Regina Browning 
Cooperative Extension Agent for 4-H Youth Development

Candice Hollingsworth 
Cooperative Extension Agent for 4-H Youth Development

Raising Rabbits for Meat

Join us May 16th at 6:00 pm to learn about raising rabbits for meat. Walt Reichert will share information about breed selection, feeding and processing rabbits. Minimum of 10 participants required to hold the class. Call 633-4593 to register.

This is the final in-person class for CAIP education credit to be offered locally.

10 Backyard Chicken Basics

Source: Jacquie Jacob, extension poultry project manager

Having a small chicken flock in the backyard is very popular these days. To have a successful flock producing eggs for your family, you'll want to learn the basics.

1. Make sure you check your local city and county ordinances to ensure you're able to have a backyard flock. Some ordinances require a minimum amount of land and some subdivisions and homeowners' associations have their own rules.
2. Chickens require daily care. You must feed them, provide clean water and collect eggs every single day. Managing a small flock is an excellent opportunity to teach children a certain amount of responsibility, but ultimately, you'll oversee the health and well-being of your flock.
3. Birds get sick and it may be difficult to find a veterinarian to provide care for them.
4. Cleanliness and sanitation are critical elements in caring for a small flock. Everyone must wash their hands before and after handling the birds. Also, no matter how tempting, avoid bringing your chickens into the house and don't use your kitchen sink to wash equipment.
5. Poop happens. Chickens eat a lot and hens use about 60% of the feed they consume and excrete the other 40% as manure. You must have a plan for that manure. One option is adding it as an odor-free fertilizer for your home garden.
6. Keep it down. Chickens make noise. Only roosters crow, however, hens are not always quiet and can make a lot of noise letting everyone know they just laid an egg.
7. The egg season will come to an end. Chickens stop producing eggs at some point in their lives and may live a long

time beyond their egg-laying years. Have a plan for what you will do with hens that stop producing. If you keep them as pets, you'll have to keep feeding them and providing other resources for their care.

8. Housing is a big part of keeping a flock. Your birds will need a house that provides shelter from the weather, nest boxes for egg laying and perches for roosting at night. Make sure housing is easy to clean and provides protection from predators. You'll have to manage their bedding well to prevent rodents from making your chickens' house their home.

9. Scratch that. Chickens scratch when they forage. If you let hens run free, you may need to place a fence around your garden if you don't want the birds to destroy it.

10. Know how to get chicks. You will most likely want to raise your hens from chicks. You can buy them online and have them shipped to your home, but some suppliers have minimum quantities for orders. You may have neighbors or friends who also raise chickens willing to join you in an order. Remember you'll need to provide new chicks with a heat source, such as a lamp, for at least six weeks.

For more information about small flocks, visit <https://afs.ca.uky.edu/poultry/poultry-publications> or contact the Extension office.

Youth Livestock Auction

Adult volunteers have been hard at work revamping the Shelby County Youth Livestock Auction. This year's auction will include a completely new and exciting format allowing more youth projects to be highlighted. Community members will have the opportunity to support youth participants in a variety of ways, including but not



Prevent/Control Pinkeye

clip tall, mature grass	reduce and control flies
treat problems quickly	consider vaccinating

University of Kentucky
College of Agriculture,
Food and Environment
Cooperative Extension Service
Agriculture and Natural Resources

limited to purchasing an animal. Check out the 4-H page in this newsletter for more information and be watching for additional communication leading up to the auction in September.



Improve hay quality by cutting at the correct growth stage. Stage of maturity is the single most important factor impacting the nutritional value of hay. Grasses should be cut at the boot stage. Rainfall in the spring often delays harvest. Making baleage allows producers to cut hay one day and bale it the next.

University of Kentucky
College of Agriculture,
Food and Environment
Cooperative Extension Service
Agriculture and Natural Resources

A
G
R
I
C
U
L
T
U
R
E



EQUINE PASTURE STOCKING RATES

Horses generally eat 1 1/2 to 2% of their body weight daily.

Recommended pasture allowance for a 1,000 lb horse is 2 to 4 acres per horse.

If pastures become overgrazed, they provide lower quality forages because of a lack of plant growth.

Under-stocking (a horse on more than 2 to 4 acres) can also be an issue because the horse(s) may not be able to keep up with the vegetation growth, result in greater selective grazing and lowering the quality of forage over time.

University of Kentucky
College of Agriculture,
Food and Environment
Cooperative Extension Service
Agriculture and Natural Resources

Articles By:
Corinne F. Belton
Cooperative Extension Agent for
Agriculture and Natural Resources

Corinne F. Belton

2023 SHELBY COUNTY YOUTH AGRICULTURAL INCENTIVES PROGRAM (Y.A.I.P.)

**APPLICATION PERIOD:
APRIL 3, 2023 – July 31, 2023**

Applications and guidelines will be available beginning Monday, April 3, 2023 and **MUST BE RETURNED NO LATER THAN 4:15 P.M. ON MONDAY, JULY 31, 2023. NO LATE APPLICATIONS WILL BE ACCEPTED.** Funds are NOT awarded on a first-come/first-served basis. *No faxed or emailed applications will be accepted.*

Guidelines and applications may be picked up between 8:00 a.m. and 4:30 p.m. at the
Shelby County Extension Office
1117 Frankfort Road Shelbyville, KY 40065

The cost-share limit for 2023 YAIP is \$500. This is a 50/50 cost-share. For example, if you are approved and complete all project requirements and you spend \$1000, you are eligible to receive up to \$500. However, funds may be pro-rated depending on number of applicants relative to available funds. Eligible investment areas are listed on the attached guidelines.

**FUNDS WILL BE DISTRIBUTED AS APPLICATIONS ARE RECEIVED,
PROJECTS ARE COMPLETED AND ALL PAPERWORK IS RETURNED.**

**DEADLINE FOR ALL PROJECTS TO BE COMPLETED AND PAPERWORK
SUBMITTED IS THURSDAY, AUGUST 31, 2023.**

Please call the Shelby County Extension Office at 502-633-4593 and speak with Regina Browning or Corinne Belton if you have questions or need assistance with your application.

Sponsored by the Kentucky Agricultural Development Fund



MAY

4-H	8	Livestock Club, 7 p.m.	Extension Office
4-H	8	Fur & Feathers, 7 p.m.	Extension Office
4-H	8	Livestock Auction Informational Meeting, 6 p.m.	Extension Office
FCS	9	Sewing Circle, Project 1-3 p.m., Open Sew 3-8 p.m.	Extension Office
HORT	9	Master Gardener Association Meeting, 6:30 p.m.	Extension Office
HORT	10	Growing Vegetables, 5:30 p.m.	Extension Office
4-H	11	Saddles-N-Spurs Horse Club, 7 p.m.	Extension Office
AG/ HO	13	Master Gardener Plant Sale, 9 a.m.—1 p.m.	Extension Office
FCS	13	Homemaker Book Sale, 9 a.m. - 1 p.m.	Extension Office
4-H	13	C5/C6 Horse Show	Henry Co. Fairgrounds
4-H	15	Dairy Club, 6:30 p.m.	Extension Office
AG	16	Raising Rabbits for Meat, 6 p.m.	Extension Office
4-H	16	4-H Camp Teen Training	Henry County
FCS	18	Spring Fashion Show, 11:30 a.m. Registration	Extension Office
4-H	18	4-H Camp Adult Training, 6 p.m.	Extension Office
4-H	18	Imagination Club, 4 p.m.	Extension Office
4-H	20	4-H Tractor Driving Contest	Spencer Co. Ext Office
FCS	20	Recipes Samples, 8 a.m. - 12 p.m.	Simpsonville Farmer's Market
4-H	23	4-H Camp Parent/Camper Orientation, 6 p.m.	Extension Office
HORT	24	Home and Garden Pests, 5:30 p.m.	Extension Office
HORT	25	Beekeepers Association Meeting, 7 p.m.	Extension Office
FCS	25	Laugh & Learn Play Date, 10 a.m.	Extension Office
4-H	25	Cloverbuds, 6 p.m.	Extension Office
FCS	31	County Homemaker Annual Meeting, 10 a.m.	Extension Office

JUNE

FCS	1	Walking Kentucky Challenge Begins	Anywhere!
4-H	5-9	4-H Camp	Lake Cumberland
4-H	12-17	Shelby County Fair	Fairgrounds
FCS	15	Laugh & Learn Play Date, 10 a.m.	Extension Office
FCS	20	Home Canning Workshop, 9 a.m.	Extension Office
FCS	23	Homebased Microprocessing Workshop, 9:30 a.m. - 2:30 p.m.	Extension Office
HORT	23	Master Gardener June Picnic	Extension Office
HORT	29	Gardening with Small Fruits	Extension Office

*** PUBLIC NOTICE-Accommodations will be made to enable persons with disabilities to participate in programs.**

CALENDAR OF EVENTS

KEY
4-H 4-H Youth Development
AG Agriculture
HORT Horticulture
FCS Family and Consumer Sciences



College of Agriculture,
Food and Environment
Cooperative Extension Service

Cooperative Extension Service

*University of Kentucky
Shelby County
1117 Frankfort Road
Shelbyville, KY 40065-9447*

PRESORTED
STANDARD
US POSTAGE PAID
SHELBYVILLE KY
PERMIT 201

RETURN SERVICE REQUESTED

The College of Agriculture, Food and Environment is an Equal Opportunity Organization with respect to education and employment and authorization to provide research, education information and other services only to individuals and institutions that function without regard to economic or social status and will not discriminate on the bases of race, color, ethnic origin, creed, religion, political belief, sex, sexual orientation, gender identity, gender expression, pregnancy, marital status, genetic information, age, veteran status, or physical or mental disability. Inquiries regarding compliance with Title VI and Title VII of the Civil Rights Act of 1964, Title IX of the Educational Amendments, Section 504 of the Rehabilitation Act and other related matter should be directed to Equal Opportunity Office, College of Agriculture, Food and Environment, University of Kentucky, Room S-105, Agriculture Science Building, North Lexington, Kentucky 40546, the UK Office of Institutional Equity and Equal Opportunity, 13 Main Building, University of Kentucky, Lexington, KY 40506-0032 or US Department of Agriculture, Office of the Assistant Secretary for Civil Rights, 1400 Independence Avenue, SW, Washington, D.C. 20250-9410.