



1117 Frankfort Road • Shelbyville, KY 40065  
• (502) 633-4593 • Fax: (502) 633-6713 •  
www.shelby.ca.uky.edu

## 4-H Camp

If you are signed up for camp, you will be receiving a packet in the mail before Spring Break with camp information and forms to complete!



We are still looking for adult volunteers to attend 4-H Camp.

## Ag Programs

- BQCA Trainings
- Raising Poultry
- Farmers Market Scales Certification
- Direct Marketing for Small Farms
  - Rooted in Shelby
  - All-Weather Surfaces
- Premise ID for Pork Producers
- Top 10 Tractor Maintenance Tasks
  - Bale Grazing



- Big Blue Book Club
- First Saturday Walkabout
- Come Play Bingocize!
- New Sewing Circle Projects
- Laugh & Learn Play Dates
- The Art of Eating Mindfully
- AARP Smart Driver Course
- It's Sew Fine Sewing Seminar
- Starting a Food Production Business
- FCS Tidbit: Spring Clean Your Mobile App Balance

## Horticulture

### *Winter Damage to Landscape Plants*



### Upcoming Classes/Events

- Pruning Demonstration*
- Vertebrate Pest Management*
- Seed Starting/Planting Plugs*

M  
A  
R  
C  
H

2  
0  
2  
3

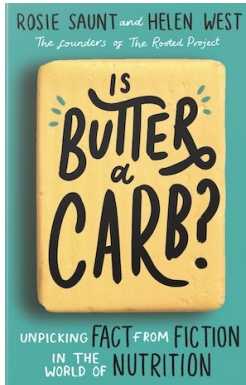
A  
P  
R  
I  
L



## Big Blue Book Club

March 2, 9, 16, and 23 (Thursdays) at 10 a.m.

Join FCS Extension for our next Big Blue Book Club series featuring, *Is Butter a Carb? Unpicking Fact from Fiction in the World of Nutrition*. This book removes the moral stigma from food and breaks down the science to provide easy, accessible evidence-based advice on how to live your healthiest and happiest life.



This series will be held on Zoom. Register online at <https://ukfcs.net/BBBC23Book1>. Call the Extension Office if you need assistance.

The Extension Office will be hosting a watch party for each session, and if you wish to join, please call the Extension Office to also RSVP for the watch party.

### First Saturday Walkabout

Saturday, March 4  
Saturday, April 1



Consider participating in the monthly **First Saturday Walkabout!** On the first Saturday of every month from 8—8:30 a.m., sign in at the front desk of Clear Creek FAC and you will receive one FREE Day Pass per person. Afterwards, you can walk on the trails, on the walking path, or on the inside walking track. You can use your pass at any later date of your choosing.

### Come Play Bingocize!

Starts March 13th! 9am



Bingocize® is a 6-week (FREE!) health promotion program that combines the game of bingo with fall prevention exercise. We meet twice a week. Come play bingo, win prizes, and meet new people while learning about techniques to reduce falls. Contact us to register!

March 13, 15 (M, W)  
March 20, 22 (M, W)  
March 28, 30 (T, Th)

April 3, 5 (M, W)  
April 10, 13 (M, Th)  
April 17, 19 (M, W)

## Sewing Circle

1—3 p.m.

Join us for a set class project (see details of projects below).



3—8 p.m.

Bring any kind of your own project to work on during this time. Master Clothing Volunteers will be available to help answer questions or offer guidance on your project. *A light meal will be served at 5 p.m.*

Please call to reserve your spot.

### Tuesday, March 14: Upcycled Under Skirt

An under-skirt is meant to lengthen a long shirt or a skirt. Please bring a button-up shirt (or two) to upcycle into your project. The shirt should be larger than a shirt you would wear. All other supplies provided. Free.

### Tuesday, April 11: Sweatshirt Remake

Turn a regular sweatshirt into an embellished jacket. Please bring your own sweatshirt or two (you will be cutting the center).

### Laugh & Learn Play Dates

Thursday, March 16, 10 a.m.

Theme: Rainbows

Thursday, April 27, 10 a.m.

Theme: Rain/Spring



A free monthly playdate for children ages 3-5 and their caregiver. The program engages child(ren) in playful activities that are specifically designed to prepare them for kindergarten. Your child(ren) will listen to a story, sing songs, make crafts, play games, and enjoy a healthy snack. Parents/guardians must also attend the program to support their child(ren) through the activities.

Registration is required! Spots are limited!

### The Art of Eating Mindfully

Wednesday, March 22, 10 a.m.



It is easy to finish a meal and not remember what or how much was eaten. Taking care to focus on our senses as we eat can lead to a more satisfying experience. This class covers differences in mindless and mindful eating and tips

for being more present when you eat. The goal is to add mindful eating strategies into daily routines. Contact us to register.

*This program serves as a homemaker leader lesson.*

### **AARP Smart Driver Course** Wednesday, March 29, 12-4 p.m.

Take the AARP Smart Driver classroom course and you could save on



your car insurance! Refresh your driving skills and knowledge of the rules of the road. Learn techniques for handling left turns, right-of-ways, and roundabouts. Discover proven driving methods to help keep you and your loved ones safe on the road. Contact the Extension Office to register!

Please bring your payment with you at the day of the class to give directly to the instructors.  
Cost: \$20 for AARP Members  
\$25 for non-members

### **It's Sew Fine: Sewing Seminar** Thursday, April 13 - Friday, April 14 Boyle County Extension Office

Check out this two-day event of sewing projects on clothing accessories, garment construction, quilting, and home decoration. Registration fee is \$50, plus individual class fees.



Registration and payment is available online at <https://tinyurl.com/3fvpb5vx> or click the QR code. The registration catalog and form is also available at the Extension Office and on our website under Family & Consumer Sciences. Deadline is March 13.



### **Starting a Food Production Business** Thursday, April 20, 10-11:30 a.m.

Learn how to get started with your food production business idea. Topics include requirements, permits, certifications, commercial kitchens, insurance, and resources. There will be guest presenters for each of these topics.

Program will be held at the Extension Office and also on Zoom. If you can't attend, you can still register in order to receive the recording and resources. To register, go to [tinyurl.com/3ydc29bx](https://tinyurl.com/3ydc29bx), scan the QR code, or contact the Extension Office.



### **FCS Tidbit: Spring Clean Your Mobile App Balance**

This year, add to your spring-cleaning list the task of checking your financial app balances. If you are carrying a balance, consider moving that cash into a high-yield savings account. Also, make a similar habit to check any rebate and coupon apps you may use. It may be time to "cash out" your rewards, earn some interest on those dollars, and keep your money safe.

Cash is becoming less popular as there are now more ways to pay for things. A 2022 Pew Research Center study found that 41% of Americans say none of their purchases in a typical week are paid for in cash. That means those consumers are using some other form of payment, whether it be debit, credit, or money transfer apps.

The popularity of payment apps such as Venmo, PayPal, and Cash App is on the rise. According to a NerdWallet survey conducted by the Harris Poll, about two-thirds of mobile payment app users maintain a balance in their account. The survey found that nearly half of app users keep more than \$100 in their account.

However, many users don't think about protections for the money that may be stored in those accounts. The apps are meant to be used for transferring funds, not storing balances. Those apps may not offer the same protections one would get from a financial institution. Banks and credit unions offer insurance to cover the accounts they hold. Money payment apps likely do not.

*References:*

*El Issa, Erin. (Feb. 26, 2020). Most Americans Go Mobile with Payment Apps – Here's How They Roll. Retrieved Dec. 12, 2022, from <https://www.nerdwallet.com/article/banking/mobile-payment-app-survey>.*  
*Faverio, Michelle. (Oct. 5, 2022). More Americans Are Joining the 'Cashless' Economy. Pew Research Center. Retrieved Dec. 12, 2022, from <https://www.pewresearch.org/fact-tank/2022/10/05/more-americans-are-joining-the-cashless-economy/>.*

Articles By:

Elizabeth Coots  
Cooperative Extension Agent for  
Family & Consumer Sciences



## Winter Damage to Landscape Plants

The winter of 2022-2023 has been unusual, to say the least. The cold snap in December was one of the coldest we've seen in decades, while the following month of February ended up being one of the warmest on record. The repeated back and forth of pleasant, almost spring-like weather, then cold dipping below freezing has had many landscape plants and overwintering insects horribly confused. Evergreens going brown and dropping their leaves, bees flying about and looking for food in January when there is none, and the grass in lawns nearly ready for their first mowing. Let's take a closer look at how winter influences plant health and behavior.

Plants are well adapted to being able to handle persistently cold weather if they are prepared. As temperatures start to drop in the fall and the day lengths get progressively shorter, perennial plants take the time to slow their growth and store up their sugars for the coming months, while annuals finish their life cycle by producing seed for growing the next year's generation. Should something happen that interrupts this process then it can impede that plant's ability to withstand the declining temperatures. For instance, if a perennial is pruned or cut back before it goes entirely dormant, it may stall or even reverse its winter preparations in an attempt to heal its wounds. These sugars which would have been used to sustain it for the coming months and help give it a head start in the spring are instead lost or depleted, and the plant likely will reemerge weaker the following spring.

Evergreens like hollies, laurels, or boxwoods are a bit of a different story. Though their growth slows down in winter, they don't go dormant like deciduous plants do. This means that they are still photosynthesizing and pulling up water from their roots and losing it through their leaves. Like other landscape plants, evergreens are well adapted to being able to handle cold temperatures. It's when it is so cold that the ground freezes, when the roots cannot take up any more water from the soil, and the dry wind sucks the moisture out of the

leaves, that much of the damage happens. Leaves discolor starting at the edges going inward before dropping from the plant entirely, and the full extent of the problem is not always visible until days or weeks later. Thankfully, winter injury/burn (also known as desiccation) is usually not fatal to plants, which recover after putting out healthy new growth in the spring. Though younger plants and those which are not cold tolerant are less likely to make it out alive. Some actions which can help prevent this kind of damage include watering before a sustained period of freezing temperatures, mulching around the plants, and temporarily covering the plants with a cloth or providing them a wind-break in winter weather.

Many plants need sustained cold temperatures to keep themselves healthy. Dormancy is in some ways similar to sleep, it gives the plants a break and lets them prepare themselves for the next growing season. For some, it's even hardwired into their biology.

'Vernalization' is the term for when plants require a minimum number of days below a certain temperature to be able to flower as usual the next spring. Apple trees are a good example, needing a sustained period of cold under 45 degrees to be able to properly flower and fruit in the spring. Other common plants affected include cherry trees and strawberries, biennial crops like cabbages and carrots, as well as spring bulbs like tulips, daffodils, and hyacinths. Without the cold, they may struggle to grow and reproduce the next spring.



Seeds too, often need a period of cold before they can germinate (in a process called 'cold stratification'). Particularly many of our native plants. Milkweed, Black-Eyed Susan's, and Coneflowers. Oaks, Pecans, and Hickories too.

Finally coming out of winter, warm weather can prompt plants to begin coming out of dormancy, producing sensitive buds and new growth which can be severely damaged in a late frost. If possible, covering the plants with a

lightweight cloth may help protect them from this kind of damage.

References used:

*Leaf Scorch/Drying of Woody Plants:* <http://plantpathology.ca.uky.edu/files/ppfs-or-w-17.pdf>

*Vernalization, Why Plants Need Winter:* <https://extension.illinois.edu/blogs/garden-scoop/2015-01-09-vernalization-why-plants-need-winter>

*Seed Stratification: What Seeds Require Cold Treatment:* <https://extension.illinois.edu/blogs/good-growing/2022-01-27-seed-stratification-what-seeds-require-cold-treatment>

## 4 Steps to Planning a Vegetable Garden

### Step 1: Site Selection

Do you have enough room for what you want to grow? How much sun and water does the area get? Is it near a water source? How is the soil? Is it easily accessible or visible to you?

### Step 2: Choose How You Want Your Garden

What kinds of plants do you want to grow? Consider how much labor you are willing to spend on the garden. Have pathways in and around the garden for ease of labor and harvest. If the space has poor soil, think about using raised garden beds. Try not to have the taller plants shade out the sun for the rest of the bed.

### Step 3: Amend and Prepare the Ground

Take a soil test and think about whether you plan to till or no-till. Do you plan to use organic/plastic mulch to keep down the weeds? Does your soil need fertilizer or an amendment of pH? Think about irrigation, how do you plan to water the garden? Some options include running drip irrigation, sprinklers and overhead irrigation, or setting buckets with holes into the ground to help deliver water directly to plant roots.

### Step 4: Begin Planting

Cool season crops like broccoli, kale, lettuce, and carrots are better planted outside around mid-March/April, while warmer season plants like squash, corn, and tomatoes are better planted around the first week of May.

Reference: *Preparing a Vegetable Garden Site:* <https://extension.unh.edu/resource/preparing-vegetable-garden-site>

## Upcoming Classes/Events:

### **Fruit Tree Pruning Demonstration at Mulberry Orchard**

Come join us at mulberry Orchard (1330 Mulberry Pike, Shelbyville) for a fruit tree pruning demonstration on **March 22nd (Wednesday) at 6 p.m.** It's still winter, so please dress in preparation for the weather.

### **What's Nibbling On My Plants?**

Learn about various garden and lawn vertebrate pests and learn about technology and techniques designed to help keep them out. **March 30th at 5 p.m.**, please call the Extension Office at (502) 633-4593 to sign up.

### **Starting Seeds and Planting Plugs**

All you need to know about how to start seed (indoor/outdoor) and plant transplants into the garden! Join us on **April 12th at 5 p.m.** and call the Extension Office at (502) 633-4593 to sign up!

## Beekeeping Meetings/Events:

The Beekeepers Association meets every **4<sup>th</sup> Thursday of the month at 7 p.m.** to discuss everything that is relevant in beekeeping each month. Friendly towards both experienced beekeepers and beginners looking to learn, feel free to join us on **March 23<sup>rd</sup> and April 27<sup>th</sup>.**

## Master Gardener Meetings/Events:

The Master Gardeners Association meets every **2nd Tuesday of the month at 6:30 p.m.** The next meeting is on **March 14th**, with our guest speaker being Skye Drane presenting on Garden Timetables (the best times to plant vegetables for your garden). Both in-person and zoom options are available.

**May 13th** will be the Master Gardener Fair (Plant Sale) this year. More details to follow.



Kentucky Extension  
Master Gardener

Articles By: *A. Skye Drane*  
Skye Drane  
Horticulture Technician

H  
O  
R  
T  
I  
C  
U  
L  
T  
U  
R  
E

### 4-H Livestock Judging

4-H'ers interested in beef cattle, sheep, swine and meat goats should join the Livestock Judging Team!

Livestock judging teaches the basics of meat animal evaluation, breed identification, and EPD's and performance data. Team members learn to compare and rank classes of livestock and then to defend their decisions with oral reasons.



Livestock Judging practices will begin March 13 from 4-6 p.m. and continue each Monday after until the state contest. For more information or to join the team, contact the Extension Office.

### 4-H Shooting Sports Meeting

Shelby County 4-H Shooting Sports club will kick off a new year at a Parent/New Member Open Meeting on Tuesday, March 7 at 6 p.m. at the Shelby County Extension Office. This meeting will provide important information about the club and expectations for parents and 4-H members. We encourage anyone interested in shooting sports to attend this meeting. Shooting Sports includes the disciplines of archery, riflery pistol and trap.



### 4-H Camp Update

Response to attend 4-H Camp has been overwhelming! Camp is currently full and a waiting list has started. If you would like to be put on the waiting list for camp please turn in your camper registration form to the Extension Office. We will not be accepting camp payments for campers placed on the waiting list. If a camp spot becomes available we will contact the next camper on the waiting list. There is still a good chance you could go to camp as families make other plans for the summer and remove their kids from the camp list.

Teen Leaders and CITs should submit their applications by March 13. The interviews and selection process will begin soon and you will be contacted by the Extension Office.

We still need additional adult volunteers to attend 4-H Camp. If you are interested, please complete an application and volunteer packet. We will have an orientation for all volunteers that go to camp. We are taking more campers and more cabins this year. Camp is a rewarding

experience for volunteers and it is free to volunteer! We really need adult volunteers to go to camp with us!

### Kentucky Ag Tag Program Donations

During the month of March farmers can make the voluntary donation of \$10 when renewing their farm license plates at the county clerk's office in March. March is the month that all farm tags expire and need to be renewed. All voluntary donations will be split evenly between 4-H, FFA and the Kentucky Proud program.



Last year Shelby County 4-H received just over \$1,400 from the program. Funds were used to support the 4-H program in Shelby County.

Making the voluntary \$10 donation is an excellent opportunity for our agricultural community to support the youth of our community and help fund the programs that can make a lasting difference in their lives.

### Shelby County Fair

The Shelby County Fair is June 12-17. We are looking forward to showcasing all of the great project work of our 4-H members.

It is not too early to start preparing your fair entries now. Please be aware that 4-H project categories can change form year to year. Stop by the Shelby County Extension Office to pick-up a 4-H Fair Entry Catalog and, if applicable, the curriculum that goes along with the projects.

### Fashion Revue

Fashion Revue will be held on May 4 at 7 p.m. at the Shelby County Extension Office. Everyone is invited to attend and see the participants enrolled in 4-H sewing, crochet and knitting projects model their creations.

If you want to participate in the Fashion Revue, please fill out a Clothing Information Sheet. 4-H'ers who are sewing at Heritage and the Extension Office will receive a Clothing Information Sheet during their workshop. If you are not sewing in one of the workshops, please contact us for a sheet or it can be found on the 4-H page of the Extension website. We need these turned in prior to the Fashion Revue so we can create score cards and write scripts for each model.

## 4-H Tractor Safety and Driving Contest

The Tractor Driving and Safety Contest will be held this year at the Spencer County Extension Office on Saturday, May 20. Participants will learn and demonstrate technical and operational skills related to lawn and farm tractors. The safety meeting will be held in the morning with driving contest to follow in the afternoon. This will also count as the Area Contest. Area winners compete at the State Fair. Contact the Extension Office for more information and to register.

### Safety Meeting Topics:

- Safety
- Tractor Part Identification
- Driving Course Information



### Age Divisions:

- Junior (9-13) Zero Turn Mower
- Senior (14-18) Zero Turn Mower
- Junior (12-13) Tractor
- Senior (14-18) Tractor



## Livestock Skill-a-thon State Competition

Congratulations to the Shelby County 4-H Skill-a-thon Team as they took home top honors in the Junior Division at the State Contest.

Competition Results included:

### **High Junior Team Overall:**

Sophie Franklin, Ruby Ballard, Elle Gilleo & Jorja Gilleo

### **3rd Place Junior Team:**

Abby Gajdzik, Nick Gajdzik, Henley Stephens and Preston Zinner

### **Junior Overall Individual Results:**

Sophie Franklin (1st), Ruby Ballard (2nd), Elle Gilleo (6th), Henley Stephens (10th), Jorja Gilleo (14th), Nick Gajdzik (15th), Abby Gajdzik (30th), Nash Wonderlich (44th), Preston Zinner (45th) & Stella Franklin (69th) out of 95 Juniors.

### **3rd Place Senior Team:**

Wade Browning, Sebastian Gilleo, Eli Ballard & Caleb Lipps

### **Senior Overall Individual Results:**

Eli Ballard (3rd), Sebastian Gilleo (4th), Wade Browning (36th), Caleb Lipps (57th), Mirabella Koralia (59th) out of 81 Seniors.

**Cloverbud Competitor:** Lane McCall

## 2023 Livestock Project Tagging

NEW THIS YEAR - Any 4-H or FFA member wanting to show market cattle, hogs, sheep or goats in Kentucky must order tags directly from the Kentucky State Fair. Ordering information and instructions can be found online at <https://afs.ca.uky.edu/4h-youth/validations> or contact the Extension Office. See below for market tag ordering deadlines. DNA for market cattle must be in hand of the Kentucky State Fair or postmarked by March 24 —**no exceptions** and May 24 for market hog, sheep and goats.

### Livestock Tagging Deadlines

<i>Species</i>	<i>Opens</i>	<i>Closes</i>
Market Cattle	February 1	March 10
Market Hog, Sheep & Goats	April 1	May 12

Animals that will only be exhibited as breeding animals (breeding heifers, breeding gilts, breeding ewes, and breeding does) do not need to go through the validation process. However, all breeding animals are required to be identified by June 1 by completing a Kentucky 4-H/FFA Breeding Animal Project Nomination and Location Form online .

## 2023 4-H Feeder Calf Project

If any Shelby County 4-H member is interested in showing a feeder calf this year contact Candice at the Shelby County Extension Office. Feeder calves can be dairy, beef or dairy/beef crosses but they must be born on or after September 1, 2022. Feeder calf registration deadline is Friday, May 19.



*Note: This is a Shelby County Project. There are no state sponsored shows for feeder calves.*

## Educational Hours

All youth that want to participate in livestock, dairy or horse projects must receive six hours of education under the direction of a certified leader each year. You must obtain these hours before you are approved to show or participate in any district or state events. If you have questions about obtaining your hours, contact your club leader or the Extension Office.

Articles By:

Regina Browning   
Cooperative Extension Agent for 4-H Youth Development

Candice Hollingsworth   
Cooperative Extension Agent for 4-H Youth Development



**BOCA Trainings**

Producers applying for CAIP funding who need Beef Quality Care and Assurance training should plan to attend one of several upcoming sessions. BOCA will not be offered through the summer months, so be sure to take care of your requirement early!

- Monday, March 20, 6:30 pm
- Thursday, April 13, 9:00 am
- Tuesday, April 25, 6:00 pm



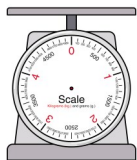
**Raising Poultry: Backyard Egg Production**

Join us Thursday, March 23 at 6:00 pm to learn about what it takes to raise laying hens in your backyard or on your small farm. Poultry aficionado Walt Reichert will lead the discussion covering topics including flock health and nutrition, maintaining laying hens, marketing eggs and more.

Call 633-4593 for information or to reserve your place in the class.



**Farmers Market Scales Certification**



Producers planning to market produce at Farmers Markets this year can bring scales to the Extension Office on Thursday, March 30 for inspection and certification.

Scales may be dropped off anytime the week of March 27 prior to 9:00 am on the 30th. A KDA inspector will certify the scales the morning of the 30th and they may be picked up after noon that day. Call 633-4593 for more information.

**Direct Marketing Workshop for Small Farms**

Small farmers who would like to learn more about marketing their products should plan to attend this two-session workshop about direct marketing.

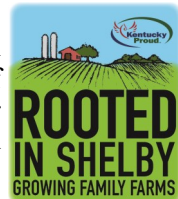
University of Kentucky extension specialist Brett Wolff with the Center for Crop Diversity will lead this training. Session 1, Tuesday, April 4 will cover marketing basics and value-added product development. Session 2, Tuesday, April 25, will cover personal selling skills and customer retention and engagement.

Both sessions will begin at 6:00 pm at the Extension office. Call 633-4593 to register.



**Rooted in Shelby Accepting Membership Applications**

Rooted In Shelby is a program designed to promote the sale of horticultural, agricultural and other products produced by Kentucky Proud enterprises located in Shelby County. Areas represented can be anything grown or produced in Shelby County, including but not limited to, meat, dairy, equine, fruits, vegetables, grains, sod, honey, livestock, forages and artisanal farm products. A recognizable logo is to be used in conjunction with the Kentucky Proud logo to indicate a product's Shelby County origin.



In order to apply for membership, call or email Corinne at 633-4593 or corinne.belton@uky.edu.

**All-Weather Surfaces Can Improve Livestock Mobility**

Source: Steve Higgins, CAFE director of environmental compliance

As an attentive livestock producer, you have probably noticed your animals tend to follow the same paths to get food and water. Over time, these well-traveled paths start to lose their vegetation and erode the topsoil, particularly if they endure heavy traffic from large animals. Erosion not only wears away your topsoil, but it makes it difficult for livestock to continue to effortlessly move along these paths. In wet weather, these paths get slick and muddy and can become treacherous for animals.

You can help your animals move along these paths by installing all-weather surfaces, such as mechanical concrete. Mechanical concrete uses tires, geotextile fabric and dense-grade aggregate stone to create a sturdy surface for animals to travel.

Use a backhoe or trackhoe with a 36-inch bucket to create an 8-inch-deep trench down the well-traveled path and cover the trench with nonwoven geotextile fabric. The fabric provides drainage, friction and overall path stability. Next, remove the sidewalls of the tires leaving the tread. Semitruck tires are the best size for this project. Once you install the tires in the path, cover them with dense-grade aggregate rock.

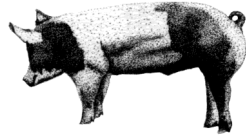
This pathway should last for many years and will allow your animals to use less energy moving around your farm.

You can get more information about installing these all-weather surfaces in the University of Kentucky Cooperative Extension publication AEN 165: Improving Cow Paths. It is available online at <http://www2.ca.uky.edu/agcomm/pubs/AEN/AEN165/AEN165.pdf> or by calling 633-4593.



**Pork Producers Should Obtain Premise ID**

KY Pork Producers Association is encouraging all pork producers large or small to obtain premise ID through KDA at the State Vet Office. This is important with the impending African Swine Flu that is moving closer and closer to the US and what impact that could have. By producers having this premise ID it will make it easier on everyone in the long run in case anything disease related were to become an issue.



For more information and a premise ID application form, email Corinne at corinne.belton@uky.edu.

**Top 10 Routine Tractor Maintenance Tasks**



Source: Tim Stombaugh, extension agricultural engineer

**Tractor**

maintenance tends to fall by the wayside when you get busy. Don't put these tasks off until spring and summer. Performing a simple front-to-back routine every week can help you remember key maintenance points. The manufacturer will have suggested intervals for most of the maintenance tasks, so you won't have to do everything every week. But the routine will prompt you to ask if it is time to do specific tasks.

Be ready for the growing season before it starts with these 10 routine maintenance tasks.

1. Inspect the front axles and steering. Is it time to grease the bearings and steering components? Make sure nothing is loose.
2. Check the coolant system. Make sure the coolant levels are adequate. Ensure the radiator is not plugged up with debris.
3. Look at those belts. Check to see they have the right tension and that they are not cracked. This will prompt you to have a spare on hand.
4. The air filter is next. Make sure it is not clogged and robbing power from your engine by not allowing air to get through.
5. Check engine oil. You should check this daily, but if you haven't, a good time to do it is during your weekly inspection. Also, check the fluid itself to ensure it doesn't have any contaminants or water in it.
6. Pay attention to the battery. If your battery is not a maintenance-free battery, check the

liquid levels. Examine the cables for corrosion and make sure they aren't rubbing against the frame components.

7. Check clutch and brake linkages. With everyday use, you may not notice linkage getting out of adjustment. Specifically check for free play and other linkage adjustments.
8. Look at the hydraulic reservoir. Make sure the fluid is at the correct level and change the fluid when needed. The system provides fluids for remote cylinders, and it the critical lubricating force in your tractor's transmission.
9. Test those tires Make sure they are properly inflated.

Check the back of the tractor. Is it clean? Make sure the hydraulic hose connections are clean to keep dirt out of the system.

These simple procedures can extend the life of your tractors and protect your critical investment.

**Bale Grazing Demonstration**

Beef cattle producers interested in learning more about bale grazing as a means of nutrient management in pastures can view bale grazing in practice here in Shelby County. Dr. Greg Halich and local cattlemen Josh and Melissa Ballard will lead a pasture walk to discuss the practice on Tuesday, March 14th. The farm is located on Elmburg Road. For specific directions and to register, please call 633-4593. A limited number of attendees can be accommodated at one time at the location, so pre-registration is imperative.



Articles By: *Corinne F. Belton*  
 Corinne F. Belton  
 Cooperative Extension Agent for  
 Agriculture and Natural Resources

# MARCH

FCS	2	Homebased Microprocessor Workshop, 9:30 a.m.	Extension Office
FCS	2	Big Blue Book Club, 10 a.m. (also March 9, 16, 23)	Extension Office
FCS	4	First Saturday Walkabout, 8-8:30 a.m.	Clear Creek FAC
AG	7	Raising the Steaks and Chops, 6 p.m.	Extension Office
4-H	7	Shooting Sports Club Informational Meeting, 6 p.m.	Extension Office
4-H	9	Communications Contest, 6 p.m.	Extension Office
4-H	9	Saddles N Spurs Horse Club, 7 p.m.	Extension Office
FCS	13	Bingocize, 9 a.m. (see list of all dates on page 2)	Extension Office
4-H	13	Fur & Feathers Rabbit & Poultry Club, 6:30 p.m.	Extension Office
4-H	13	Livestock Club, 7 p.m.	Extension Office
AG	14	Bale Grazing Demonstration	Call for location
FCS	14	Sewing Circle, 1-3 p.m. and 3-8 p.m.	Extension Office
AG	14	Raising the Steaks and Chops, 6 p.m.	Henry Co. CES
HORT	14	Master Gardener Association Meeting, 6:30 p.m.	Extension Office
FCS	16	Laugh & Learn Play Date, 10 a.m.	Extension Office
4-H	16	Imagination Club, 4-6 p.m.	Extension Office
AG	20	BQCA Certification, 6:30 p.m.	Extension Office
4-H	20	Dairy Club, 6:30 p.m.	Extension Office
AG	21	Raising the Steaks and Chops, 6 p.m.	Henry Co. CES
FCS	22	The Art of Eating Mindfully, 10 a.m.	Extension Office
HORT	22	Fruit Tree Pruning Demonstration at Mulberry Orchard, 6 p.m.	Mulberry Orchard
AG	23	Raising Poultry: Backyard Egg Production, 6 p.m.	Extension Office
4-H	23	Cloverbud Club, 6 p.m.	Extension Office
HORT	23	Beekeepers Association Meeting, 7 p.m.	Extension Office
FCS	29	AARP Smart Driver Course, 12-4 p.m.	Extension Office
AG/HO	30	Farmers Market Scales Inspection/Certification 9 a.m.	Extension Office
HORT	30	What's Nibbling on My Plants? 5 p.m.	Extension Office

<p>Welcome</p> <p><b>Evelyn White</b></p> <p>County Agriculture Investment Program</p> <p><b>CAIP</b></p> <p><b>Administrator</b></p>	
---	--

# APRIL

4-H	1	Horse Showmanship Clinic, Time TBA	Henry Co Fairgrounds
AG/HO	4	Direct Marketing for Small Farms, 6 p.m.	Extension Office
4-H	10	Fur & Feathers Rabbit & Poultry Club, 6:30 p.m.	Extension Office
4-H	10	Livestock Club, 7 p.m.	Extension Office
FCS	11	Sewing Circle, 1-3 p.m. and 3-8 p.m.	Extension Office
HORT	11	Master Gardener Association Meeting, 6:30 p.m.	Extension Office
HORT	12	Starting Seeds and Planting Plugs 5 p.m.	Extension Office
AG	13	BQCA Certification, 9 a.m.	Extension Office
4-H	13	Saddles N Spurs Horse Club, 7 p.m.	Extension Office
4-H	17	Dairy Club, 6:30 p.m.	Extension Office
AG	18	Shelby Co. Cattlemen's Association, 7 p.m..	Extension Office
FCS	20	Starting a Food Production Business, 10 a.m.	Extension Office
4-H	20	Imagination Club, 4-6 p.m.	Extension Office
AG	25	Direct Marketing for Small Farms, 6 p.m.	Extension Office
AG	25	BQCA Certification, 6 p.m.	Extension Office
FCS	27	Laugh & Learn Play Date, 10 a.m.	Extension Office
4-H	27	Cloverbud Club, 6 p.m.	Extension Office
HORT	27	Beekeepers Association Meeting, 7 p.m.	Extension Office

**C  
A  
L  
E  
N  
D  
A  
R  
  
O  
F  
  
E  
V  
E  
N  
T  
S**

<p style="text-align: center; font-size: 2em; margin: 0;"><b>Welcome</b></p> <p style="text-align: center; font-size: 3em; margin: 0;"><b>Judy White</b></p> <p style="text-align: center; font-size: 1.5em; margin: 0;"><b>Family &amp; Consumer Sciences Program Assistant</b></p>	
--	--

**KEY**

4-H  
4-H Youth  
Development

AG  
Agriculture

HORT  
Horticulture

FCS  
Family and  
Consumer  
Sciences

**\* PUBLIC NOTICE-Accommodations will be made to enable persons with disabilities to participate in programs.**





College of Agriculture,  
Food and Environment  
Cooperative Extension Service

**Cooperative Extension Service**

*University of Kentucky  
Shelby County  
1117 Frankfort Road  
Shelbyville, KY 40065-9447*

PRESORTED  
STANDARD  
US POSTAGE PAID  
SHELBYVILLE KY  
PERMIT 201

RETURN SERVICE REQUESTED

The College of Agriculture, Food and Environment is an Equal Opportunity Organization with respect to education and employment and authorization to provide research, education information and other services only to individuals and institutions that function without regard to economic or social status and will not discriminate on the bases of race, color, ethnic origin, creed, religion, political belief, sex, sexual orientation, gender identity, gender expression, pregnancy, marital status, genetic information, age, veteran status, or physical or mental disability. Inquiries regarding compliance with Title VI and Title VII of the Civil Rights Act of 1964, Title IX of the Educational Amendments, Section 504 of the Rehabilitation Act and other related matter should be directed to Equal Opportunity Office, College of Agriculture, Food and Environment, University of Kentucky, Room S-105, Agriculture Science Building, North Lexington, Kentucky 40546, the UK Office of Institutional Equity and Equal Opportunity, 13 Main Building, University of Kentucky, Lexington, KY 40506-0032 or US Department of Agriculture, Office of the Assistant Secretary for Civil Rights, 1400 Independence Avenue, SW, Washington, D.C. 20250-9410.